



Bastille Collection: Engraved Metal Wall Panels

Specification Sheet

How to select your wall panels

With many pattern options and metal choices, these engraved panels bring warmth and sophisticated detail to any space. The patterns are designed to repeat, and the panels themselves can be easily cut down to size. If you have a particular image in mind, do not hesitate to contact us about engraving a custom pattern. Although designed with the walls under bar tops specifically in mind, these panels can also be used on most walls and decorative applications.



Available Finishes Include:



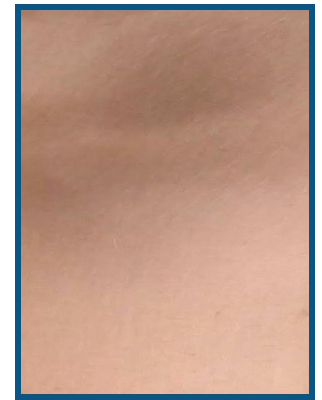
Sheet Zinc
(Claire)



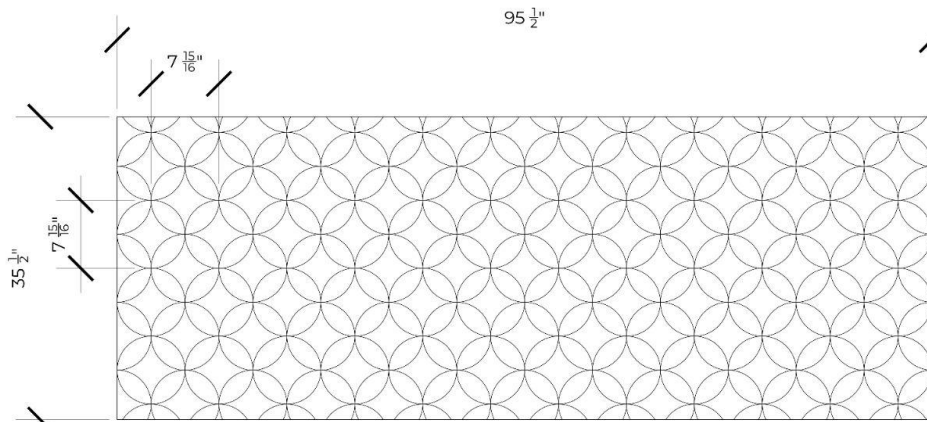
Sheet Zinc
(Milieu)



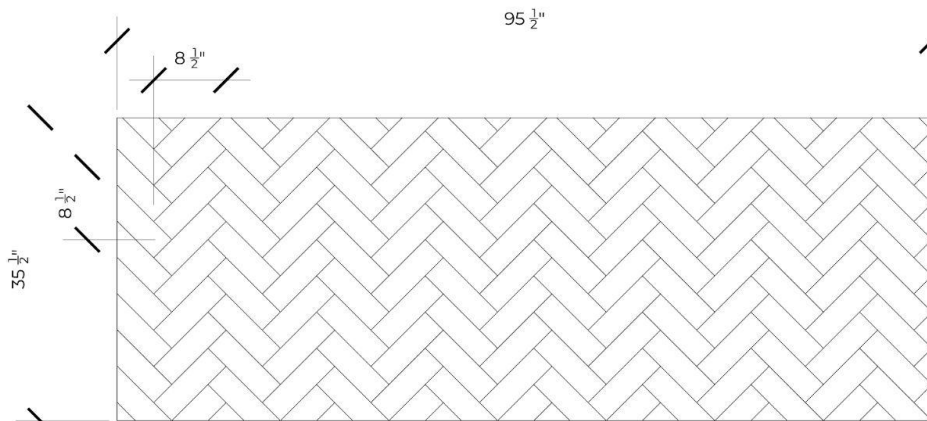
Sheet Brass
(No Patina)



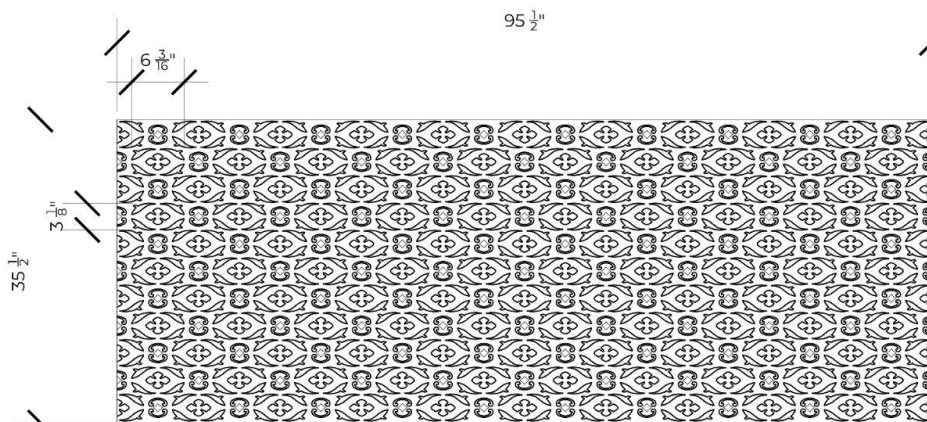
Sheet Copper
(No Patina)



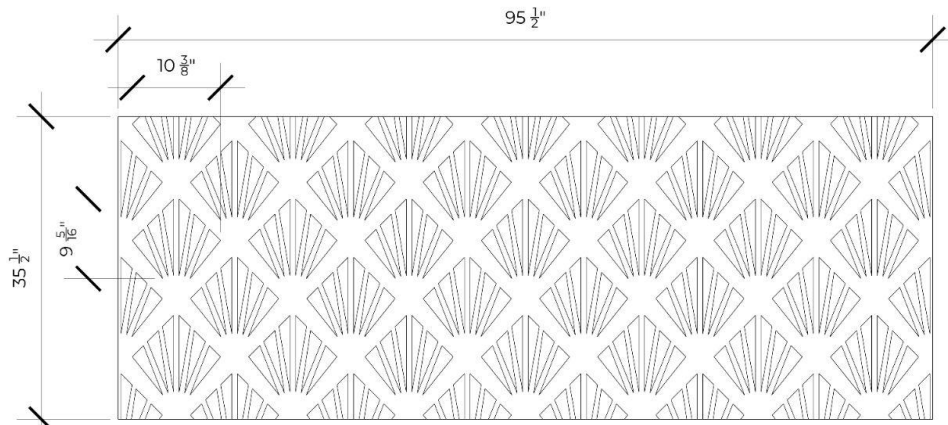
STAR



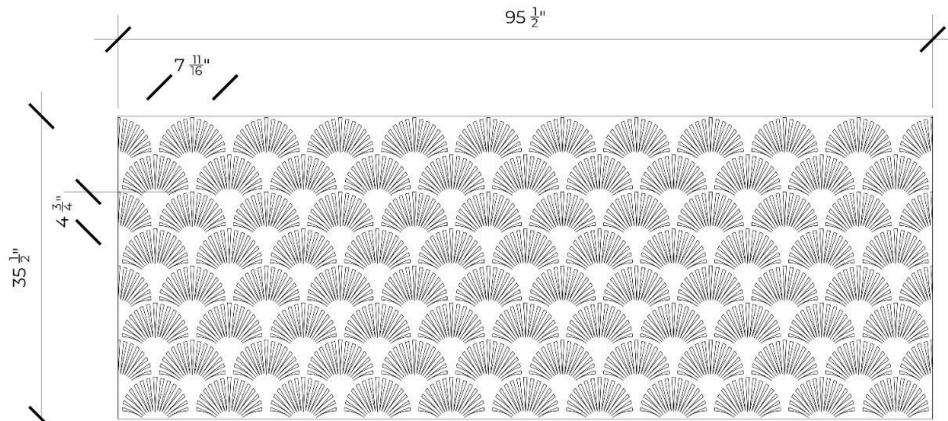
HERRINGBONE



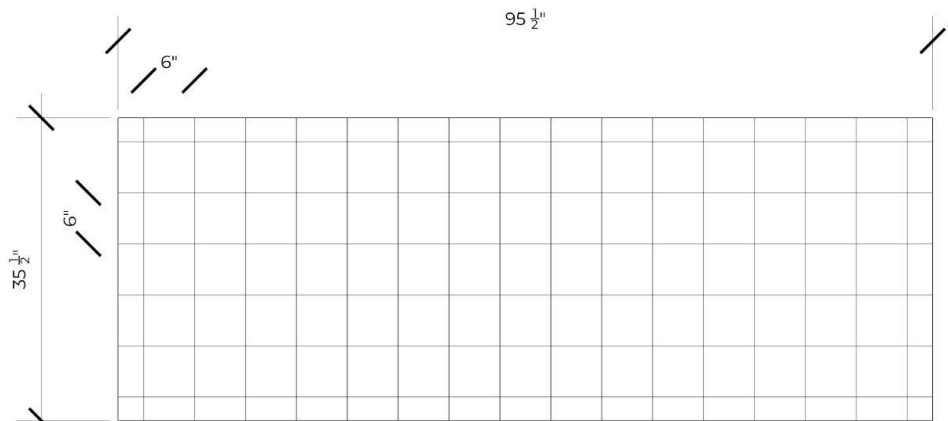
HORSE HAIR



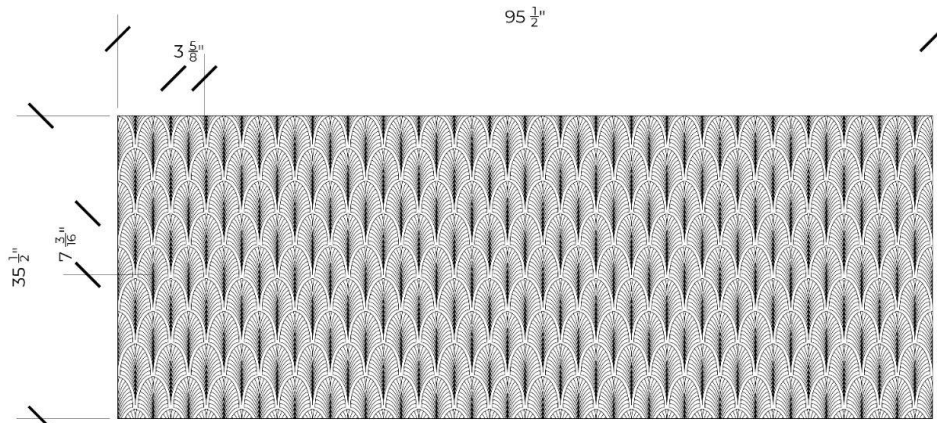
LARGE SHELL



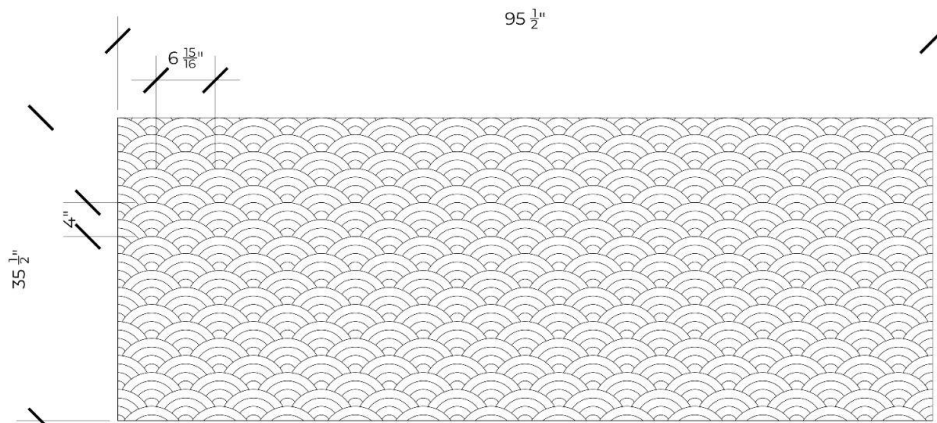
SMALL SHELL



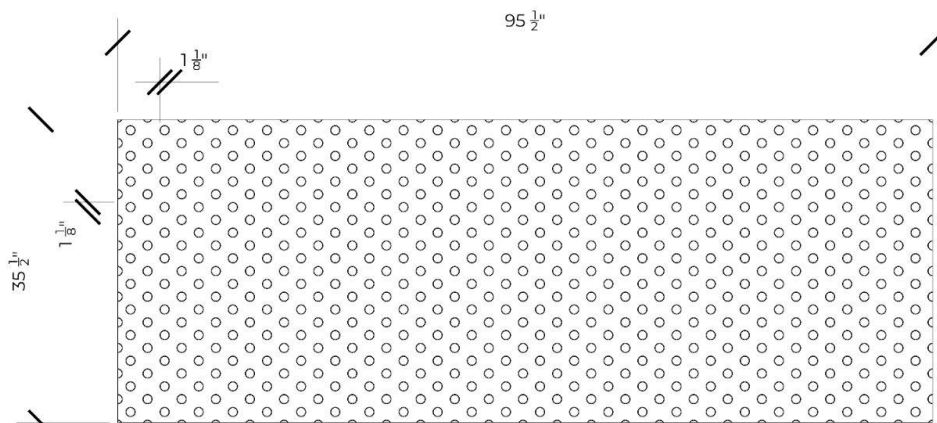
CHECK



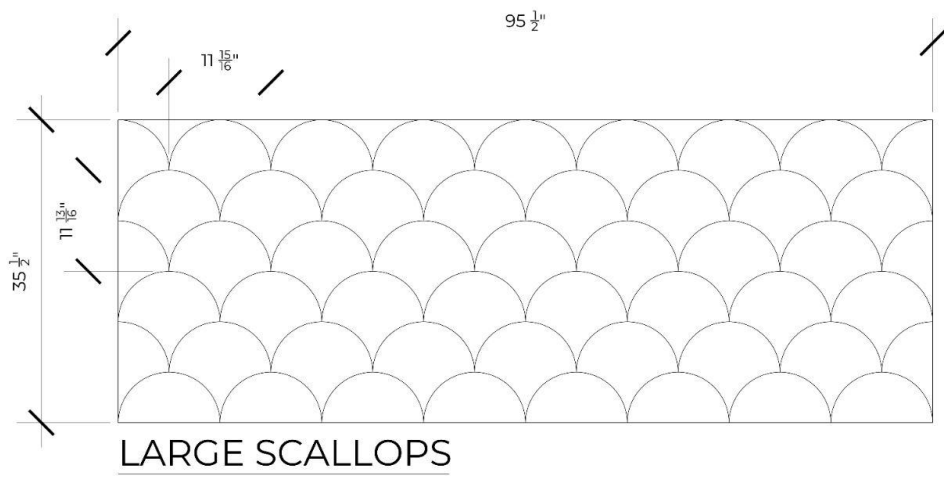
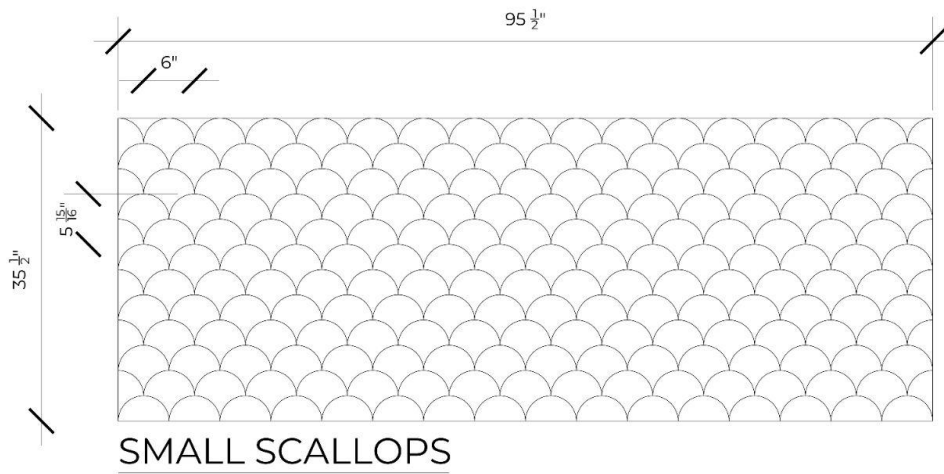
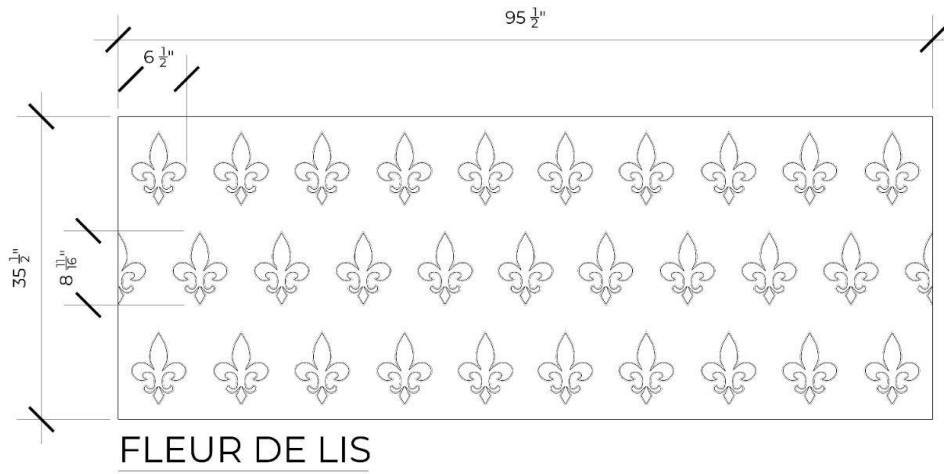
ART DECO



WAVE



POLKA DOTS



Construction & Installation

All panels are made to be 95-½” by 35-½”. Our ready to order wall panels are constructed of high quality sheet metal laminated onto ¾” thick plywood. The metal is routed flush with the edge of the plywood pieces to create clean, crisp edges. Please note that the sides of the panels are unfinished plywood. A polymer coating is applied onto the metal to keep the finish looking fresh. An optional lacquer coating can also be added upon request.

The wall panels can be carefully trimmed down as needed and can also be cut to accommodate outlets. If complex cutting will be needed, it is always wise to order more panels than the minimum needed in case one needs to be recut.

When installing, we recommend that larger sheets of ½” plywood be screwed into the wall studs. This creates a smooth and strong surface for the tiles to be adhered. Decorative trim can be added around the group of panels as desired. For more detailed information, please see our installation guide.

Caring for your Wall Panels

Sheet metal surfaces are relatively easy to maintain and are made to last for years to come.

Do use a mild soap and water or a basic household cleaner (such as 7th Generation, Simple Green or Ammonia- Free Windex)

Do Not use products that contain bleach, ammonia or citrus juice. These cleaners are too harsh for the soft surface of these materials and can cause damage.

As these sheets are a living metal, they will oxidize and respond to their environment. The finish is not static and changes cosmetic in nature will occur. How much it will change is completely dependent on its environment, what it comes into contact with and how it is

cared for. All panels have a polymer coating, slowing this process and protecting the finish. If you have a medium or dark patina, the markings will be more apparent as they are lighter in color compared to the patina. If you have a light patina, darker tones may begin to develop. This is the beauty of these materials. Do not become alarmed at the first markings, but rather embrace that the material is undergoing its natural process.

Contact Us

If you have any questions or concerns, please email us at info@labastille.com or contact us through our website.

