



Bastille Collection: Decorative Metal Wall Panels

Specification Sheet

How to select your wall panels

Sizes and quantities of decorative metal wall panels can be mixed and matched to create the pattern of your making. Simply measure your space and then layout your design options. With panels available in zinc, copper and brass, material choices can be mixed and matched to your liking.



Available Sizes Include:

- 12" x 12"
- 12" x 24"
- 24" x 24"

Available Finishes Include:



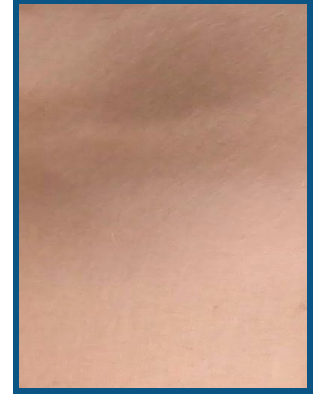
Sheet Zinc
(Claire)



Sheet Zinc
(Milieu)

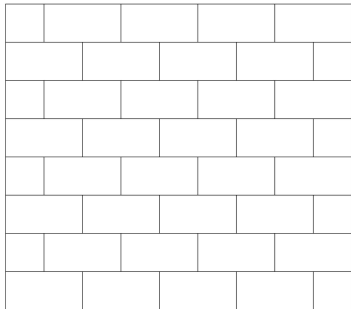


Sheet Brass
(No Patina)

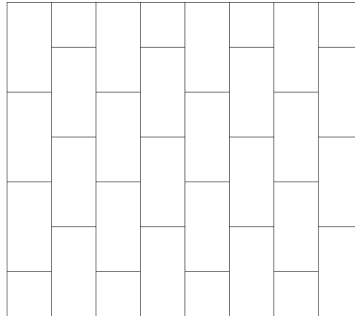


Sheet Copper
(No Patina)

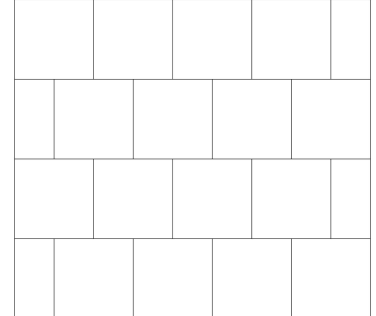
Below are some pattern suggestions, but the finished product is limited by only your imagination!



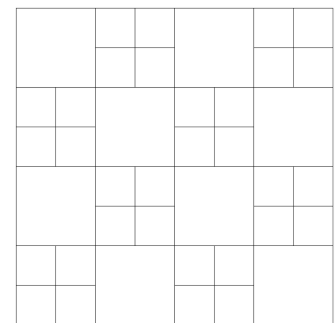
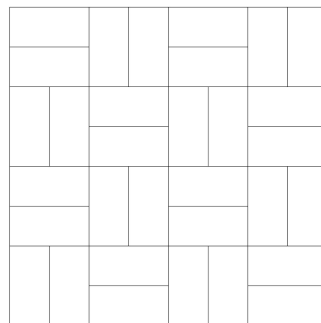
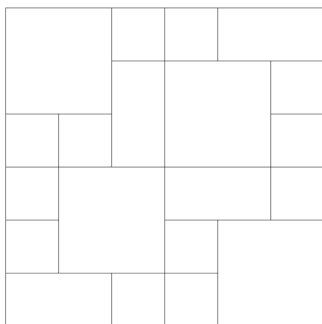
Horizontal Subway
12"x12", 12"x24"



Vertical Subway
12"x12", 12"x24"

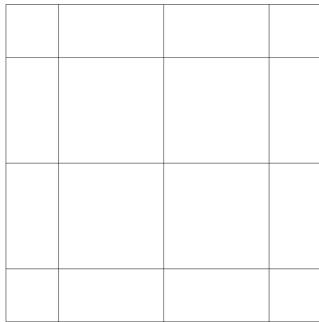


Square Subway
12"x24", 24"x24"



Tetris

12"x12", 12"x24", 24"x24"

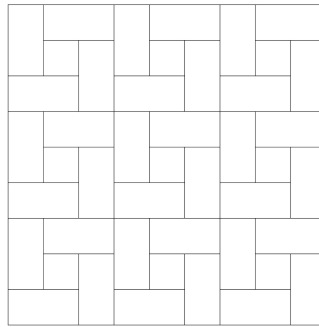


Window Panel

12"x12", 12"x24", 24"x24"

Brick

12"x24"

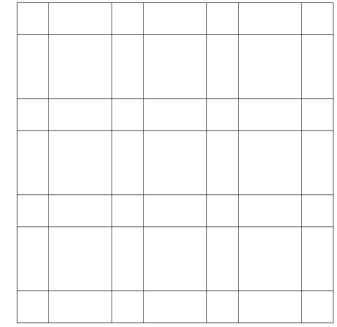


Pinwheel Mosaic

12"x12", 12"x24"

Cross

12"x12", 24x24"



Plaid

12"x12", 12"x24", 24"x24"

Construction & Installation

Our ready to order wall panels are constructed of high quality sheet metal laminated onto $\frac{3}{4}$ " thick plywood. The metal is routed flush with the edge of the plywood pieces to create clean, crisp edges. Please note that the sides of the panels are unfinished plywood. A polymer coating is applied onto the metal to keep the finish looking fresh. An optional lacquer coating can also be added upon request.

The wall panels can be carefully trimmed down as needed and can also be cut to accommodate outlets. If complex cutting will be needed, it is always wise to order more panels than the minimum needed in case one needs to be recut.

When installing, we recommend that larger sheets of $\frac{1}{2}$ " plywood be screwed into the wall studs. This creates a smooth and strong surface for the tiles to be adhered. Decorative trim can be added around the group of panels as desired. For more detailed information, please see our installation guide.

Caring for your Wall Panels

Sheet metal surfaces are relatively easy to maintain and are made to last for years to come.

Do use a mild soap and water or a basic household cleaner (such as 7th Generation, Simple Green or Ammonia- Free Windex)

Do Not use products that contain bleach, ammonia or citrus juice. These cleaners are too harsh for the soft surface of these materials and can cause damage.

As these sheets are a living metal, they will oxidize and respond to their environment. The finish is not static and changes cosmetic in nature will occur. How much it will change is completely dependent on its environment, what it comes into contact with and how it is cared for. All panels have a polymer coating, slowing this process and protecting the finish. If you have a medium or dark patina, the markings will be more apparent as they are lighter in color compared to the patina. If you have a light patina, darker tones may begin to develop. This is the beauty of these materials. Do not become alarmed at the first markings, but rather embrace that the material is undergoing its natural process.

Contact Us

If you have any questions or concerns, please email us at info@labastille.com or contact us through our website.