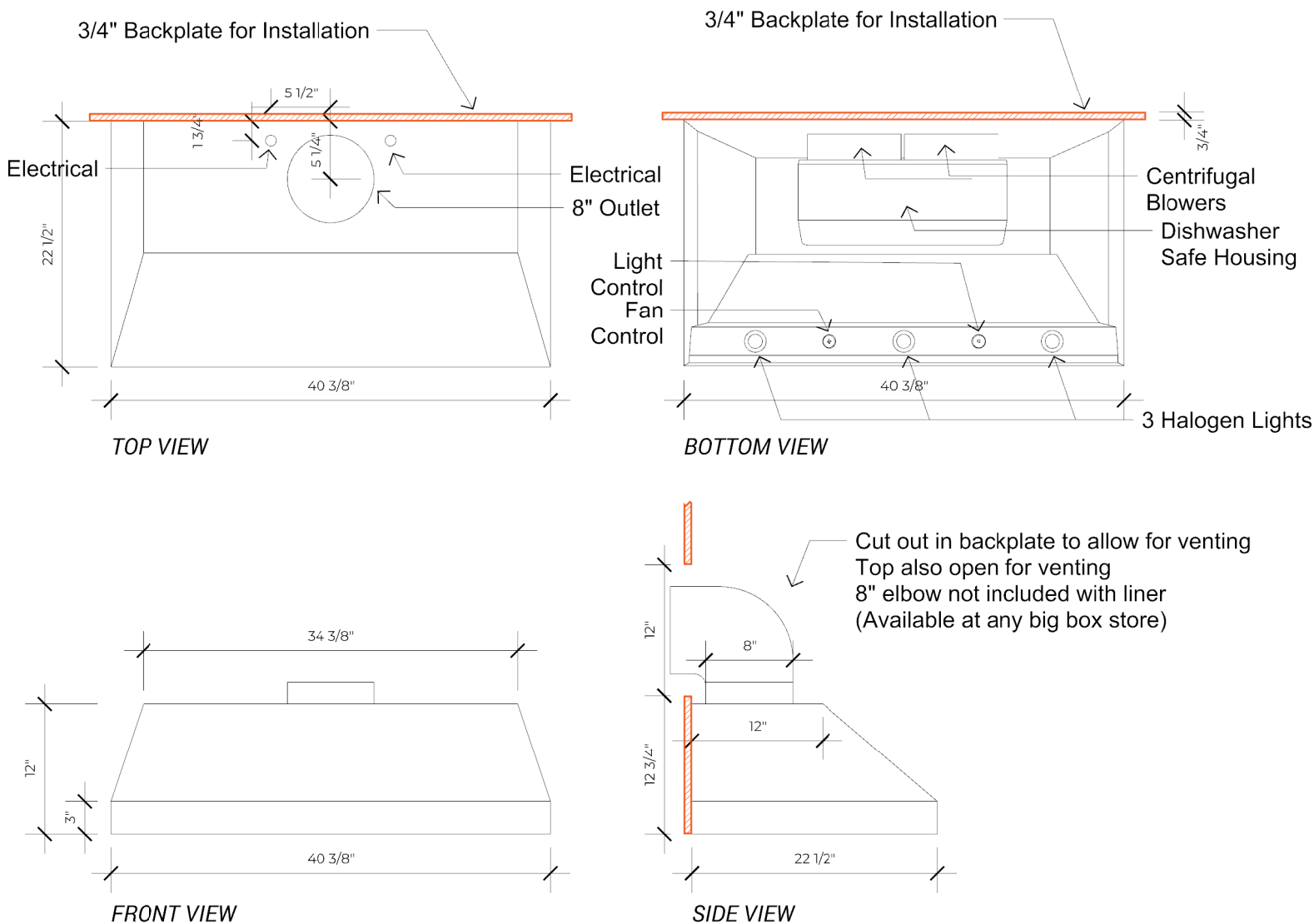


LA BASTILLE

METAL. EVOLVED.

Lucianna Range Hood
 48"W x 56"H x 27"D Hood
 40-3/8" Liner



Specifications:

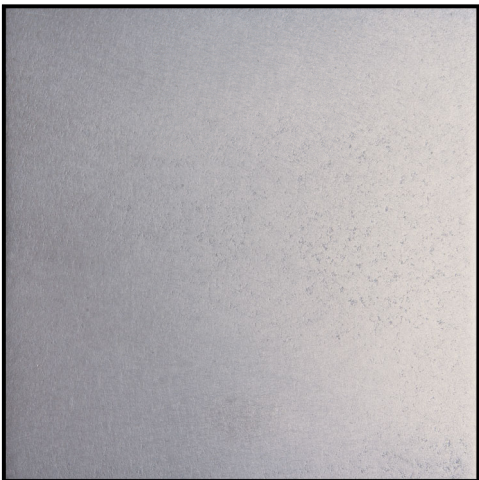
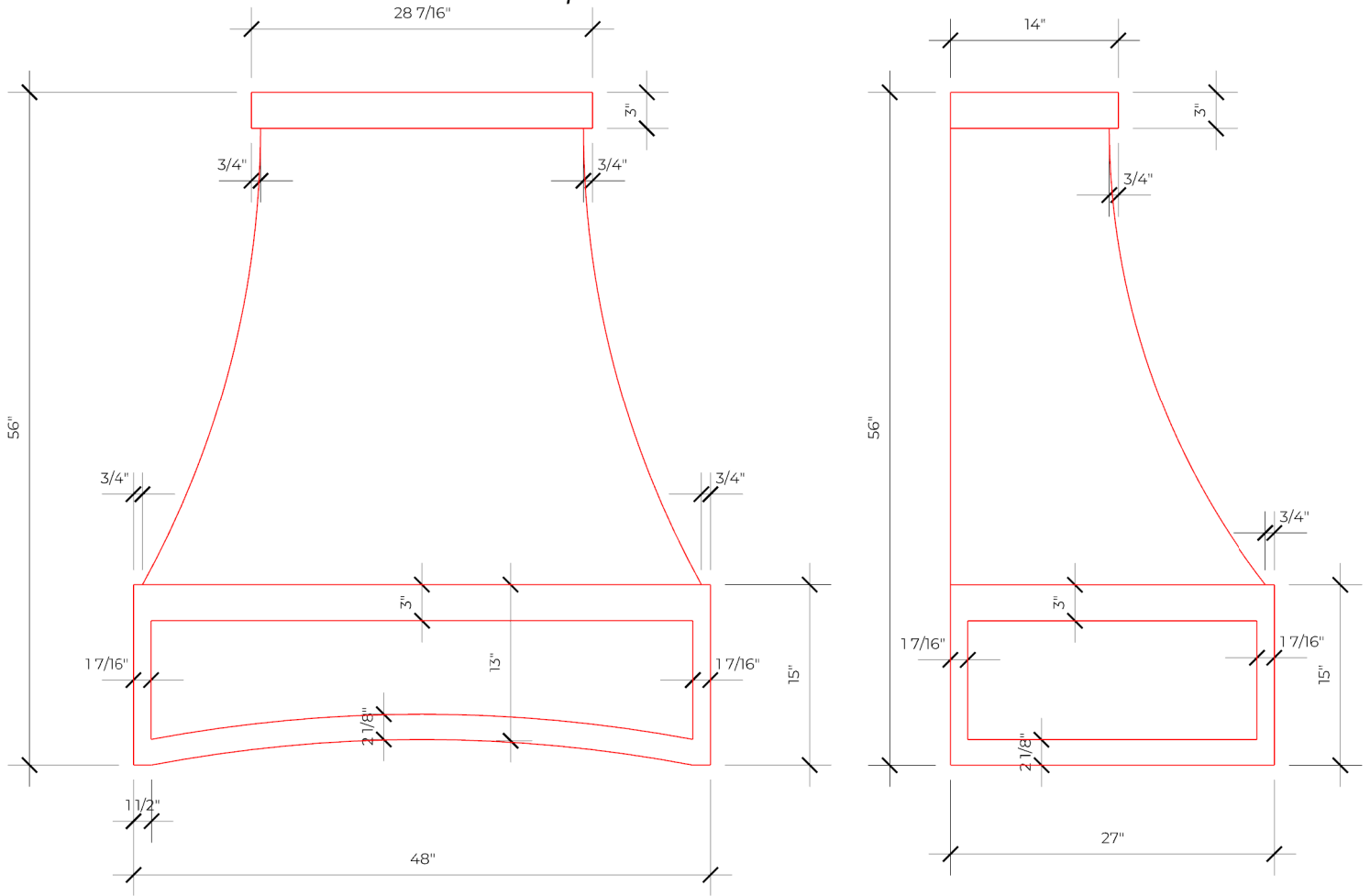
1. 900 CFM Equivalent Liner; 6.5 Sones
2. Recommended bottom of liner to be mounted 27"-30" above range
3. Liner width should be equal to or 4" greater than width of cooktop
4. Duct can be vented through wall or through top
5. Bottom of hood will be closed around outside of liner
6. Buyer responsible for ducting & connections from top of liner to exterior
7. Typically requires standard #14 or greater 120V dedicated circuit suggested:
 Grounded Neutral (White), Hot (Black), & Ground (Green). Unit pulls 4 Amps Max.
 Be sure to follow local building codes.
8. Liner typically connected by licensed electrician

LA BASTILLE

METAL. EVOLVED

Lucianna Range Hood
48"W x 56"H x 27"D Hood
40-3/8" Liner

Pattern Option Shown: Without Pattern



Cast Zinc



Cast Brass

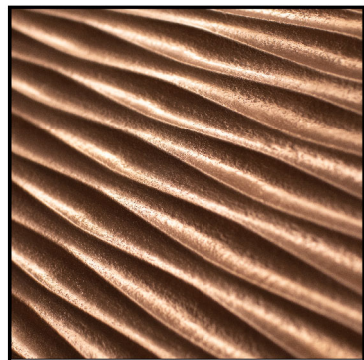
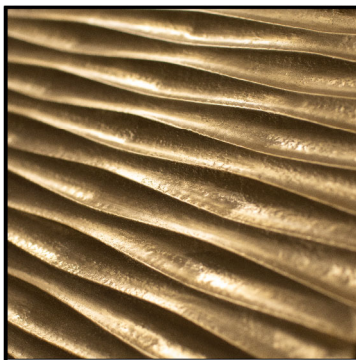
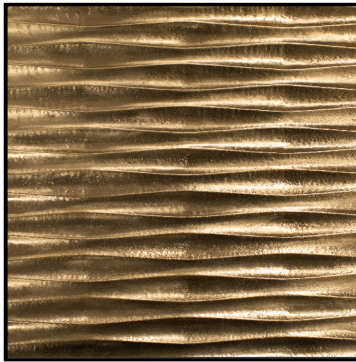
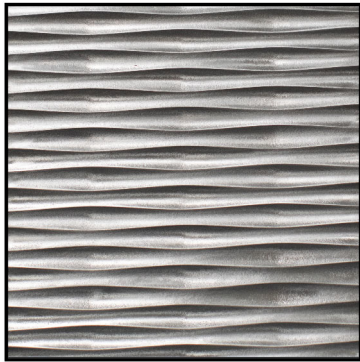
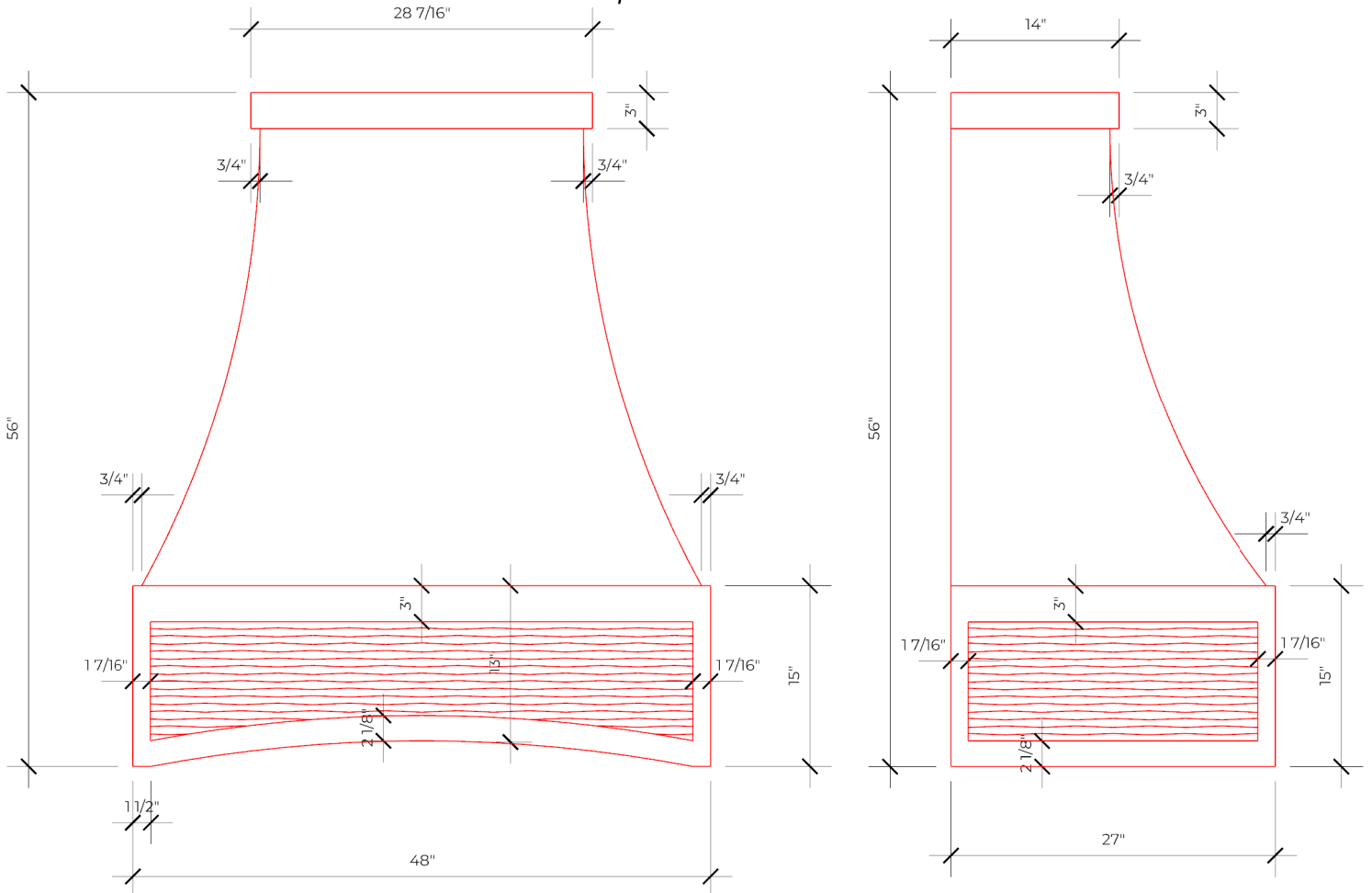


Cast Copper

LA BASTILLE

METAL. EVOLVED

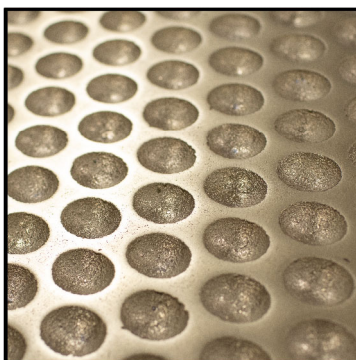
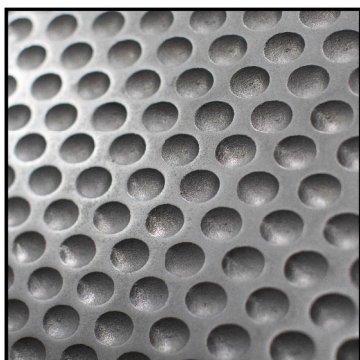
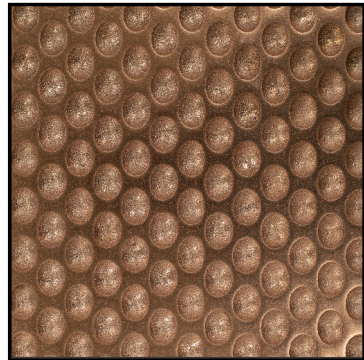
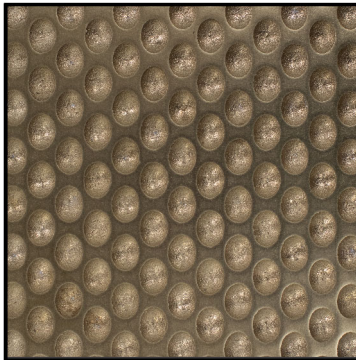
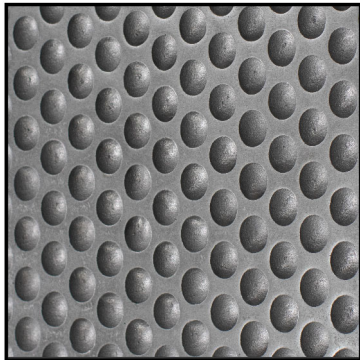
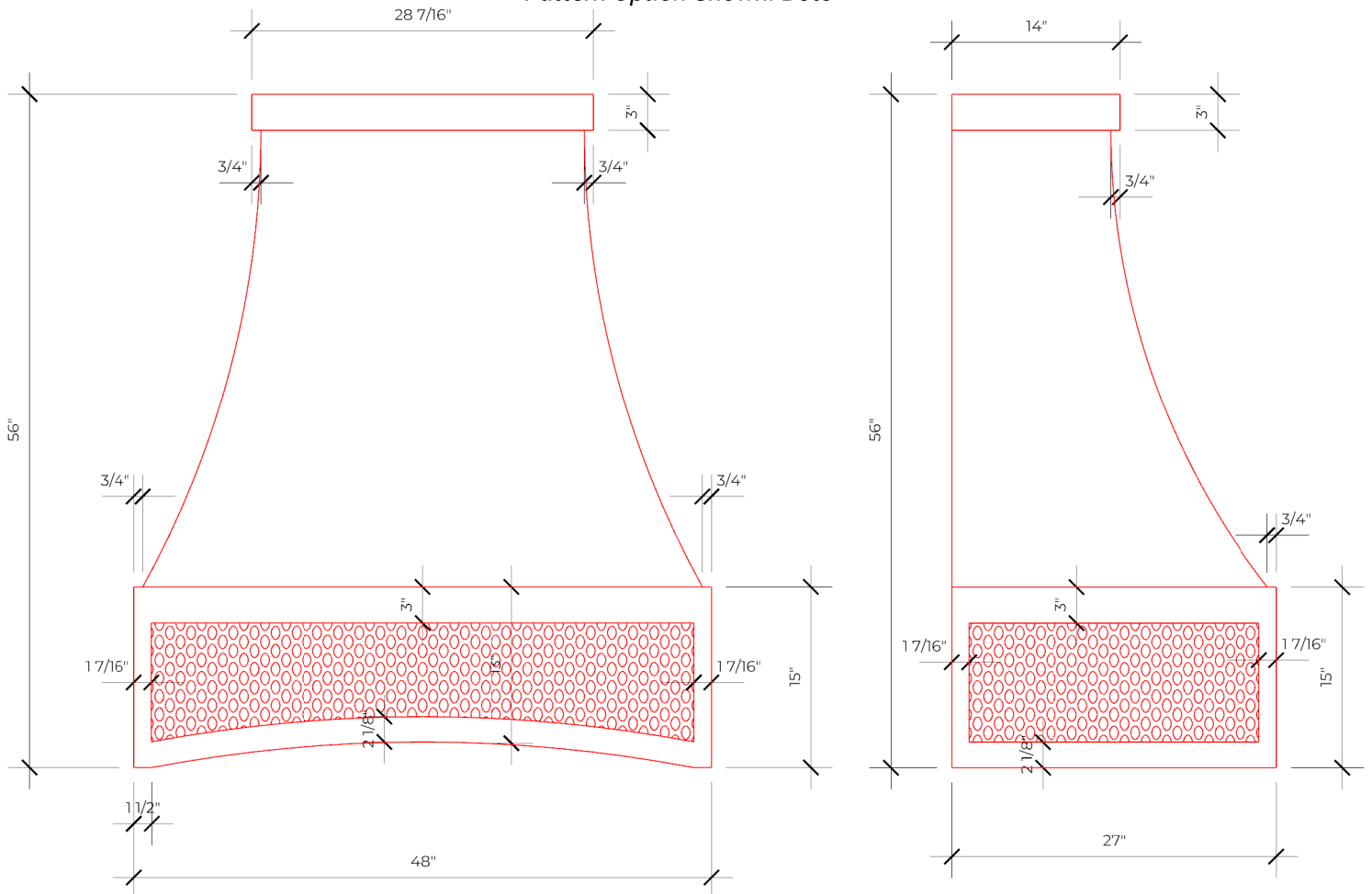
Lucianna Range Hood
48"W x 56"H x 27"D Hood
40-3/8" Liner
Pattern Option Shown: Waves



LA BASTILLE

METAL. EVOLVED

Lucianna Range Hood
48"W x 56"H x 27"D Hood
40-3/8" Liner
Pattern Option Shown: Dots

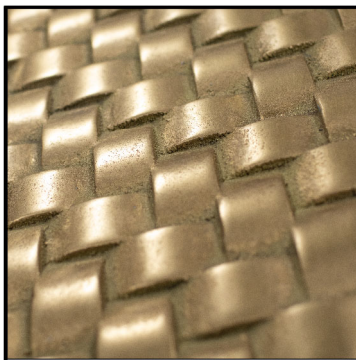
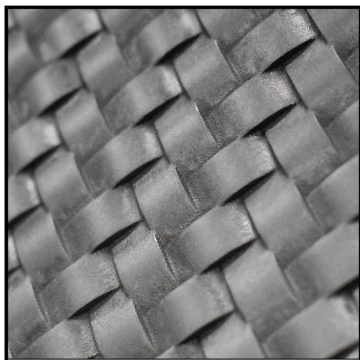
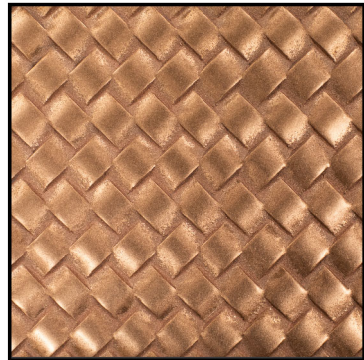
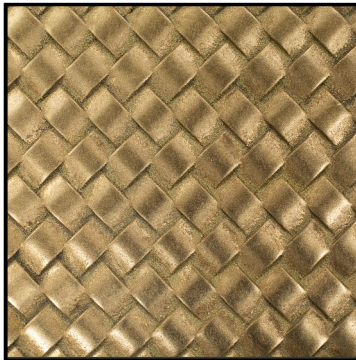
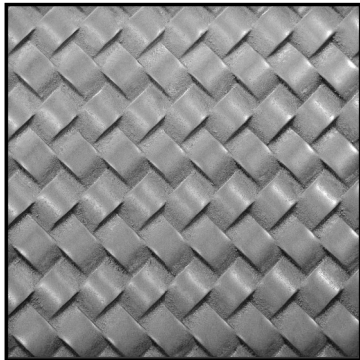
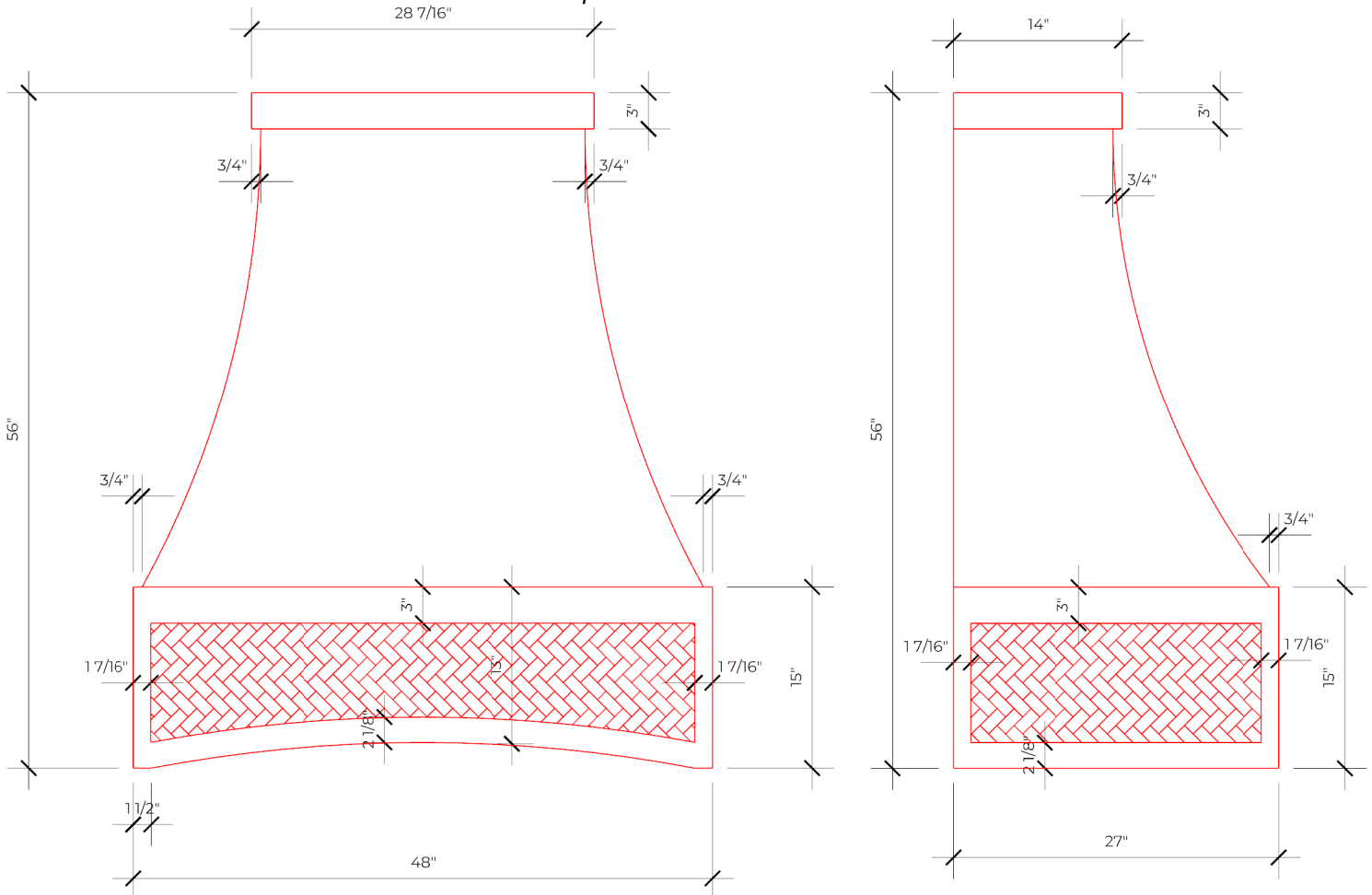


LA BASTILLE

METAL. EVOLVED

Lucianna Range Hood
48"W x 56"H x 27"D Hood
40-3/8" Liner

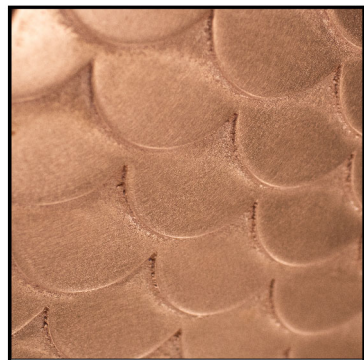
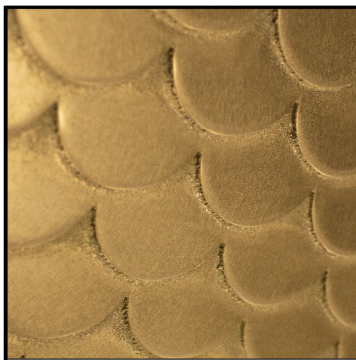
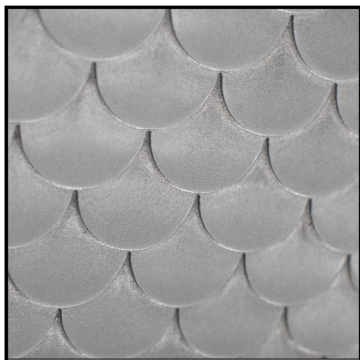
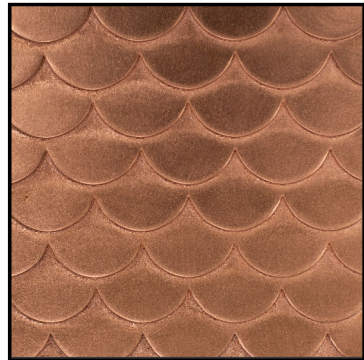
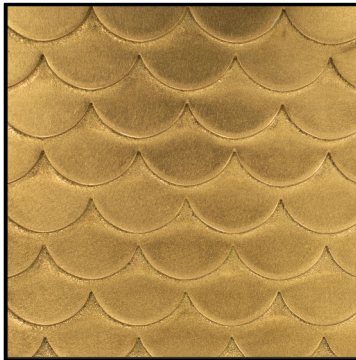
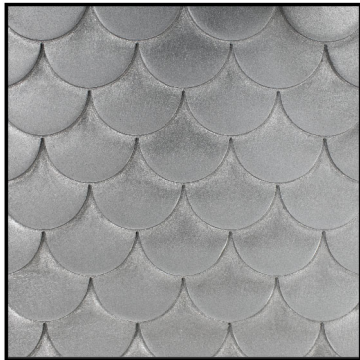
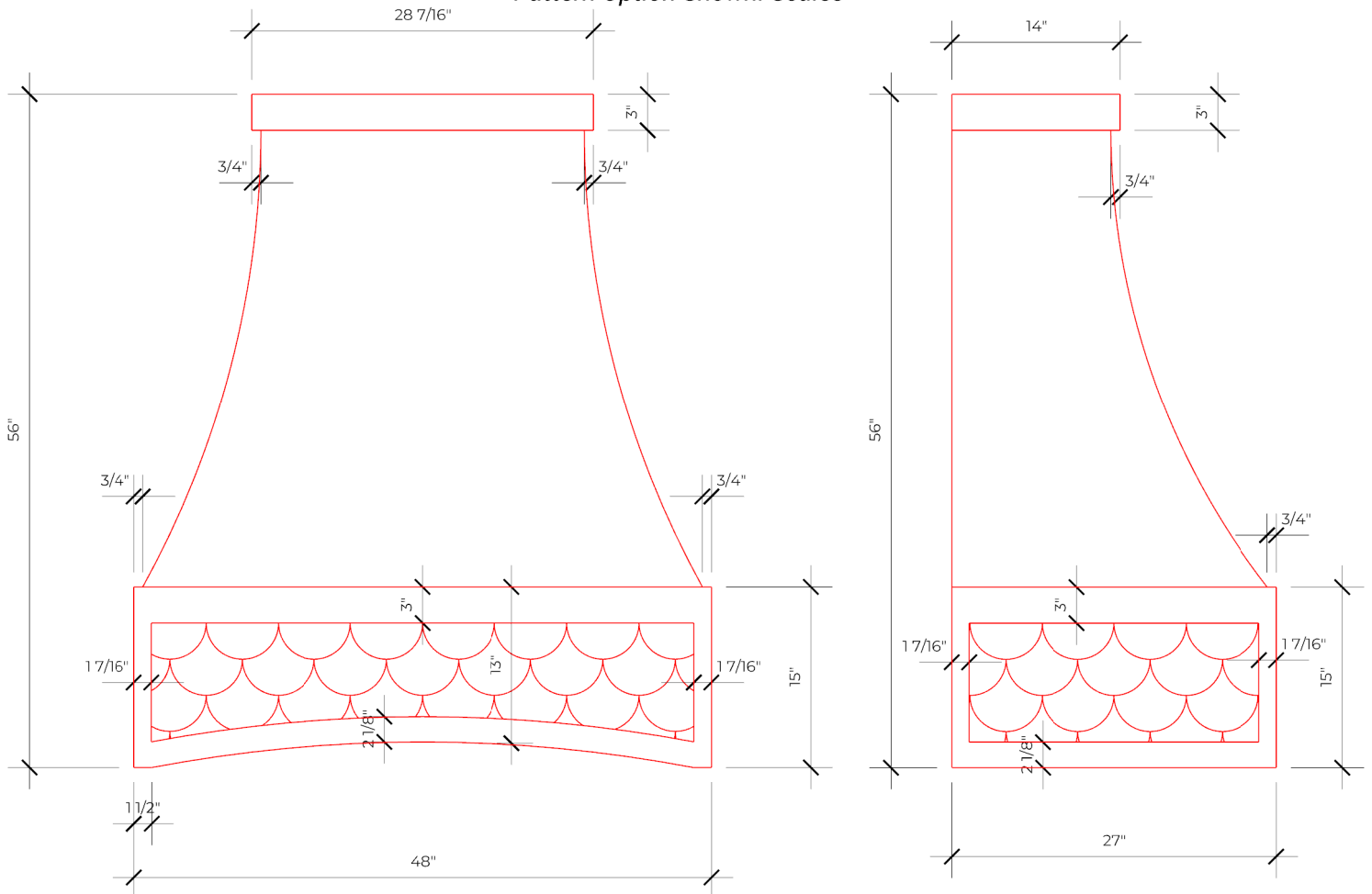
Pattern Option Shown: Basketweave



LA BASTILLE

METAL. EVOLVED

Lucianna Range Hood
48"W x 56"H x 27"D Hood
40-3/8" Liner
Pattern Option Shown: Scales



LA BASTILLE

METAL. EVOLVED

Lucianna Range Hood
48"W x 56"H x 27"D Hood
40-3/8" Liner
Pattern Option Shown: Horsehair

